



# ZigBee Smart Thermostatic Radiator Valve

- ✓ Accessible via your smartphone app, easy remote control after successful network configuration
- ✓ Programmable device with customized exclusive temperature plan, up to 6 events allowed to set each day
- ✓ After no operation for more than 5 seconds, the device enters sleep mode, which can save energy and prolong battery life
- ✓ Screen rotation: Long press the Set Button for 3 seconds to switch the screen 4 directions available

## Technical specifications

Power Supply:	3 x 1.5 V alkaline AA batteries (not included)
Current Consumption:	100mA Max
Protection Degree:	IP20
Ambient Temperature:	0~50°C
Surface Temperature:	90°C Max (at the radiator)
Connection:	M30 x 1.5mm
Linear Travel:	4.3mm
Dimensions(W x H x D):	58.4mm x 97mm x 58.4mm
Weight:	117.7 g

## 1. Standard accessories

<p>TRV</p>		<p>User Manual</p>			
<p>For Danfoss RA valves</p>	<p>For Danfoss RAV valves</p>	<p>For Danfoss RAVL valves</p>	<p>For Caleffi valves</p>	<p>For Giacomini valves</p>	<p>For M28 valves</p>
Adapters					

## 4. Temperature control mode

### Temperature control mode

Press the middle button to switch between Auto mode and Manual mode.

**\* Attention:** Only Manual mode is available when the device is not connected to Internet.

#### • Auto mode

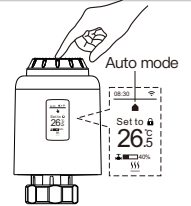
When “☀️ 🌙” is displayed on the screen, it is under Auto mode. Four time periods and setting temperature could be programmed per day, one week as a cycle, based on customized needs.

#### • Manual mode

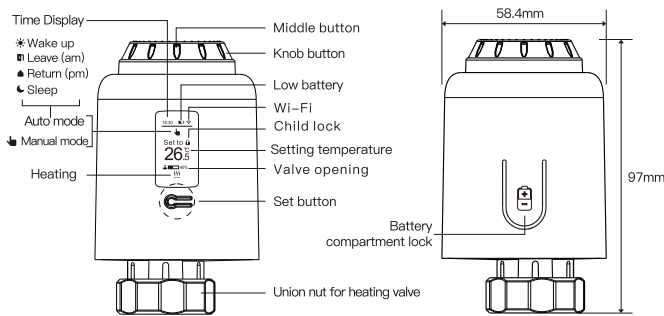
When “🔧” is displayed on the screen, it is under Manual mode. The device will work according to current setting temperature, without controlled by the time period program.

#### • Temporary mode

When setting temperature under Auto mode, the device enters Temporary mode, and then “🕒” appears on the screen. The device is switched to Manual mode temporarily, without controlled by the time period program. It will return to Auto mode by next time period.



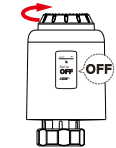
## 2. Display Symbols



## 5. Stop heating and pause heating

• **ON:** In summer, rotate the knob clockwise until “ON” is displayed under manual mode to stop heating. At this time, the heating valve is fully open. This can extend the use life of valve.

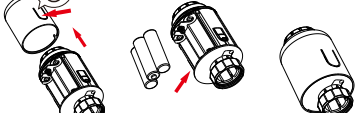
• **OFF:** In winter, rotate the knob counterclockwise until “OFF” is displayed under manual mode to pause heating temporarily. At this time, the heating valve is closed and the frost protection is activated.



**\*Attention:** After the antifreeze function is activated, the valve will open when the room temperature is lower than 5°C, and the valve will be closed when the room temperature exceeds 7°C to prevent damage to the radiator thermostatic valve due to freezing

## 3. Installation

① Press the battery compartment lock, remove the cover, and insert the batteries.



### \*Attention:

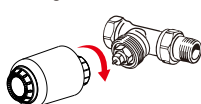
While inserting the batteries, please make sure the polarity of battery (+/-) is aligned.



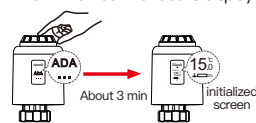
② Initialize, the mandrel pull back, then “INS...” is displayed on the screen, and dots blink to show the progress



③ When the dots “INS...” stop blinking, install the TRV union nut with M30\*1.5 thread for heating valve, and then tighten the nut.



④ Press the middle button and then “ADA...” start blinking, the device enter valve-adjusting process. After several minutes, the process is completed when initialized interface is displayed.



### How to install the adapter correctly

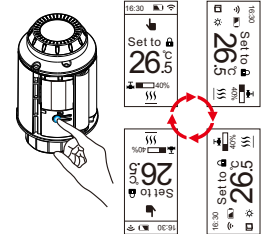
<p>For Danfoss RA valves</p>	<p>For Danfoss RAV valves</p>	<p>For Danfoss RAVL valves</p>
<p>For Caleffi valves</p>	<p>For Giacomini valves</p>	<p>For M28 valves</p>
	<p>H8.6mm</p>	<p>H11mm</p>

## 6. Adjust setting temperature and Screen rotation

• **Adjust setting temperature:** Rotate the knob to adjust setting temperature, stepping by 0.5°C.

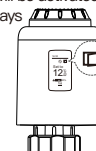


• **Screen rotation:** Long press the Set Button for 3 seconds to switch the screen 4 directions available.

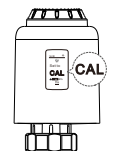


## 7. Open-window function and Anti-scale

• **Open-window function:** First, enter the APP home page to turn on the window detection function, the device will automatically identify whether the window is open. When it is detected that there is cold wind, and the temperature drops by more than 1.5°C within 4.5 min, the open-window function will be activated. At this time, the screen displays “🪟”, and the temperature is set to 12°C.


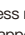


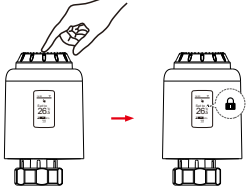
• **Anti-scale:** TRV executes routine decalcification every Monday at 12:00 to protect the valve from calcification. “CAL” will be displayed on the screen during decalcification.



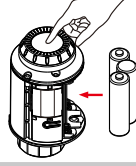
**\*Attention:** Attention: While the open-window function is activated, following operations will terminate it from taking effect. ① Temperature setting operation on the APP or device. ② The detected temperature rises by more than 1.5°C within 4.5 minutes. ③ No operation on the APP or device within 30 minutes.

## 8. Child lock function and Restore factory settings

• **Child lock function:** Long press the middle button for 3 seconds until “” is displayed on the screen to activate the child lock. While the device is locked, long press middle button for 3 seconds until “” disappear to deactivate the child lock.



• **Restore factory settings:** Long press the middle button and insert the battery at the same time until “**FAC**” is displayed on the screen and blinking for 3 seconds, the device will be restored to factory settings and restarted.

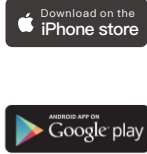
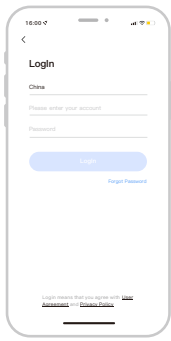


\*Attention: Once the device is restored to factory settings, all previous settings can not be recovered.

## 9. APP remote control and voice control



## 10. Download Smart Life APP

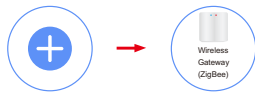


Scan the QR code above or search “Smart Life” on App Store and Google Play to download the Smart Life APP.

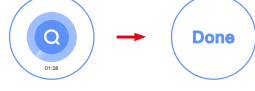
## 11. Add gateway

**Add gateway** \*Attention: some gateways' Wi-Fi LED may be Green or other colors

- When the gateway is powered on, hold button for 5 seconds until the red light blinks rapidly.
- Enter the Home page, click “+” in the upper right corner, select Gateway Control – Wireless Gateway (Zigbee).

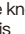


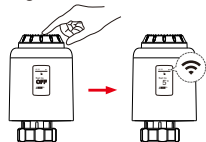
- Select 2.4GHz Wi-Fi network and enter password, click “Next”, confirm the indicator is blinking rapidly, and then click “Next”.
- Wait a moment until the device is found and initialized, then click “Done” to finish.



## 12. Add device

**Add device**

- Under manual mode, rotate the knob counterclockwise until “OFF” is displayed. Then long press the middle button for 3 seconds until “” is blinking.
- In the page of gateway, click “Add subdevice”, click “LED already blink”, wait a moment until the icon of TRV appears, then click “Done”.



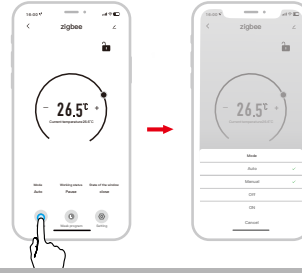
- Set the device name, and click “Done” to finish. The device has been added successfully.



\*Attention: Network configuration can only be done under manual mode. The gateway must be added before adding TRV. The TRV must be added in the page of gateway.

## 13. Mode selection

- Click “A” to select mode.



\*Attention: Click “+” or “-” to adjust the setting temperature.

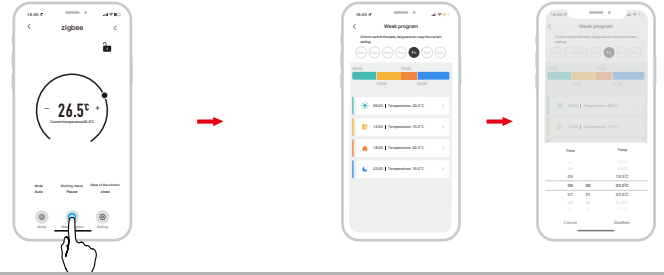
**Auto mode:** Four time periods and setting temp. could be programmed per day, one week as a cycle, based on customized needs.

**Manual mode:** The device will work according to current setting temp. without controlled by the time period program.

**Off mode:** The valve will be closed to stop heating.

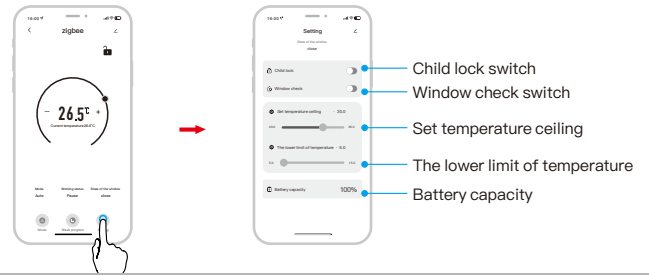
## 14. Week program setting

- Click “L” to enter the week program setting page.
- Set four time periods and setting temperature based on customized needs.



## 15. Advanced setting

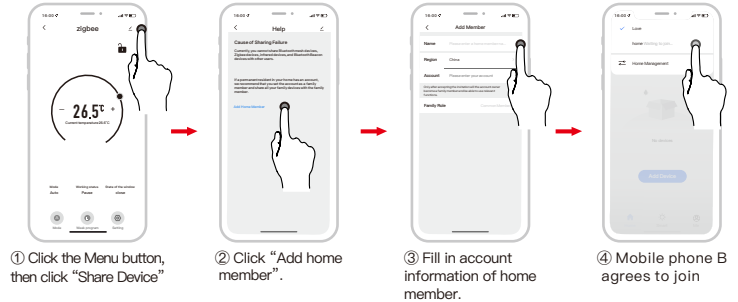
- Click “@” to enter the advanced setting page.



## 16. Device sharing function

- Share the device to other family members, allowing them to remotely control the TRV device.

\* Example of mobile phone A sharing mobile phone B



## 17. Voice control

- After waking up the speaker, you can say:

**Amazon Alexa : Alexa,**


- \* Set the DEVICENAME to 26 degree
- \* Drop the DEVICENAME by 1 degree
- \* Raise the DEVICENAME by 1 degree
- \* Make the DEVICENAME warmer
- \* Turn on the DEVICENAME child lock
- \* Turn off the DEVICENAME child lock
- \* What temperature is the DEVICENAME set to
- \* What is battery on the DEVICENAME

**Google Assistant : OK google,**

- \* Set the DEVICENAME to 23 degree
- \* Turn on the DEVICENAME child lock
- \* Turn off the DEVICENAME child lock
- \* IS my DEVICENAME child lock on?
- \* Turn on child lock for the DEVICENAME
- \* Turn off child lock for the DEVICENAME
- \* Set the DEVICENAME to auto
- \* Set the DEVICENAME to manual

\*Attention: “DEVICENAME” is the device name, you can also name it yourself.  
The temperature unit of TRV and smart speaker must be identical.

## 18. Troubleshooting and maintenance

Error code	Problem	Solution
F0	Temperature sensor abnormality	Contact after-sales staff
F1	Slow valve operation	Check the installation and heating valve
F2	The stroke is too long	Check the fastening of TRV
F3	The stroke is too short	Check the heating valve
F4	Running out of battery	Replace batteries immediately
Battery symbol (  )	Low battery	Replace batteries within 4 weeks